



Manager's Meeting

Spring 2021 Season

South County Little League

March 11, 2021
Zoom Meeting



Content

- ▶ Welcome to 2021 Spring Season
- ▶ Organization
- ▶ Facilities and Fields
- ▶ Schedules
- ▶ Local Rules
- ▶ Health and Safety
- ▶ Upcoming Activities
- ▶ What You Need to Do
- ▶ Questions

Welcome to the 2021 Season

Let's keep the Momentum Going



- ▶ **Record Registration for 2021 - 455 Players**
 - Baseball – 7 Divisions / 34 Teams
 - Softball – 4 Divisions / 9 Teams

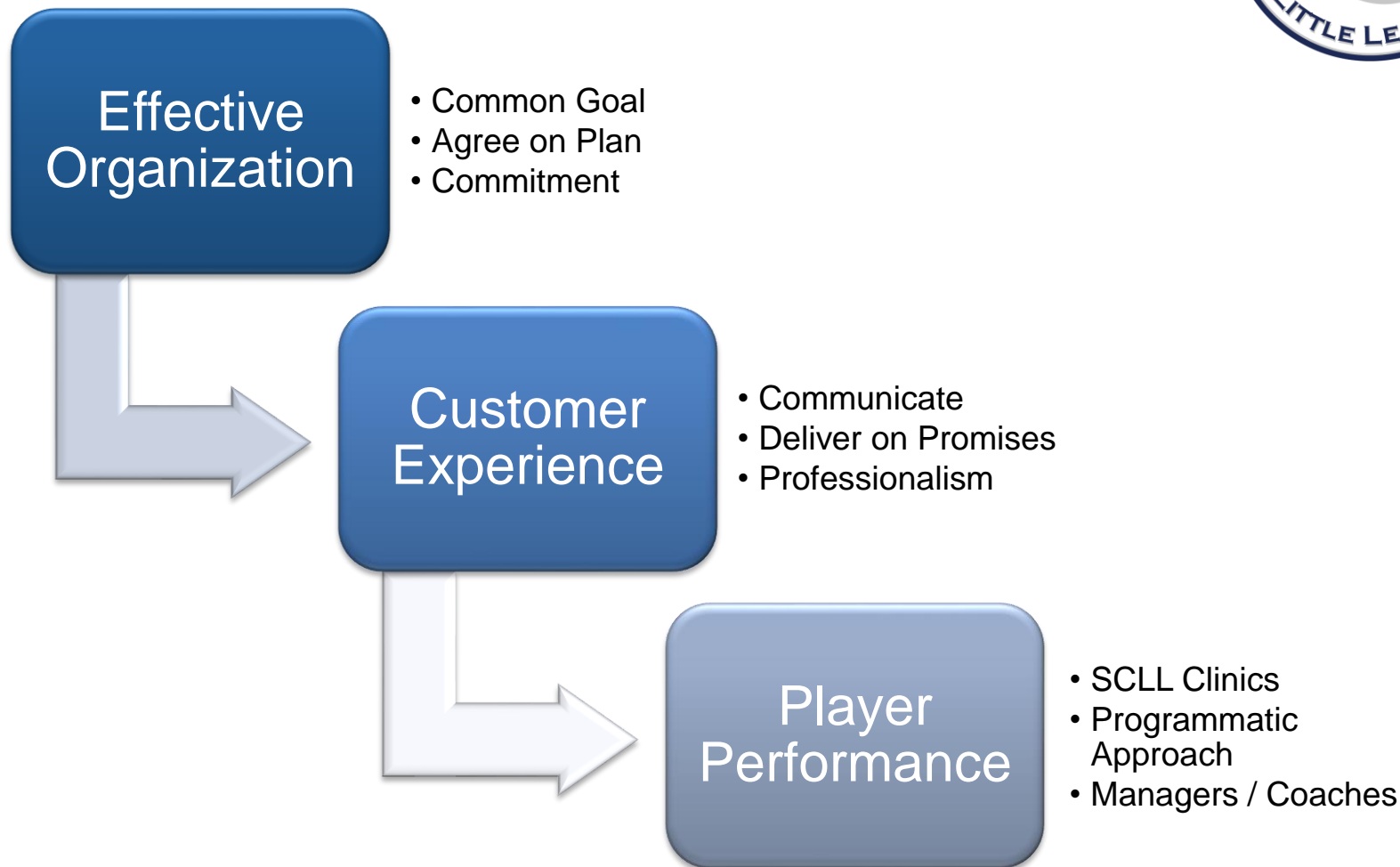
- ▶ **45% increase in 3 years + 145 Players**
 - Added 51 Players in 2019
 - Added 62 Players in 2020
 - Added 32 Players in 2021

- ▶ **It's No Accident – We decided to do this.**
 - Established a goal of 500 players for the League
 - Executed plan to deliver high quality experience

- ▶ **Managers and Coaches are a major part of that experience**

2021 – We are in Phase 3 of SC500

You are what will make the difference

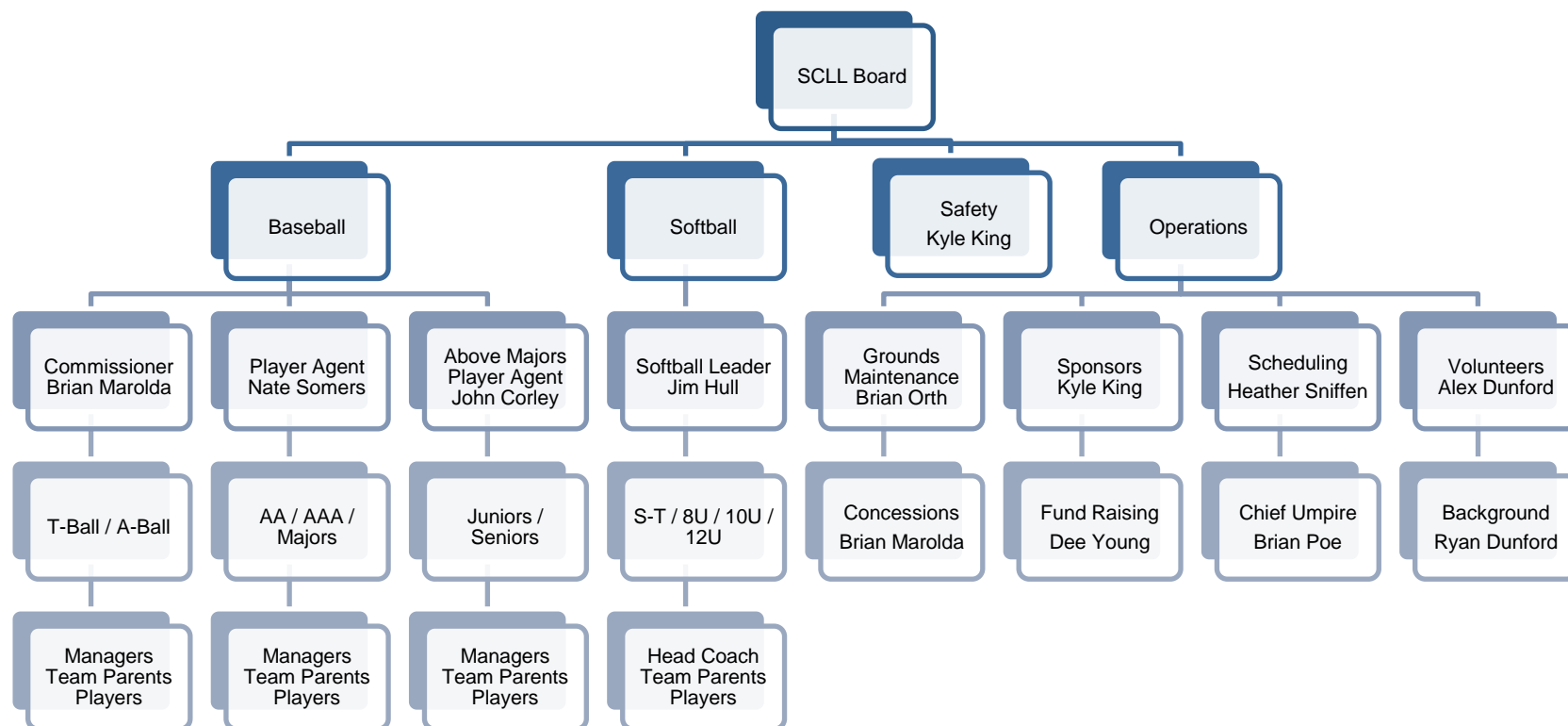




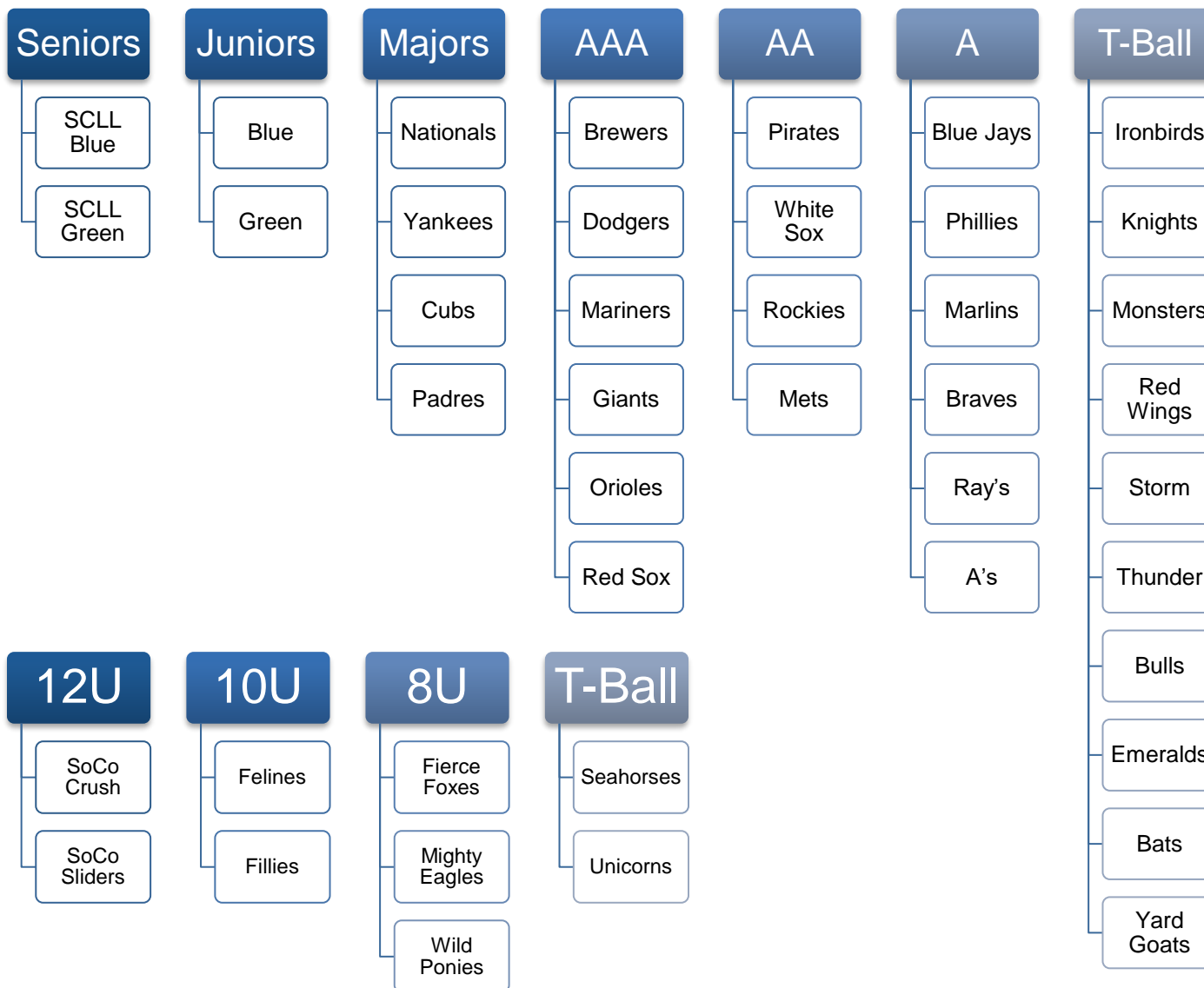
Content

- ▶ Welcome to 2021 Spring Season
- ▶ Organization
- ▶ Facilities and Fields
- ▶ Schedules
- ▶ Local Rules
- ▶ Health and Safety
- ▶ Upcoming Activities
- ▶ What You Need to Do
- ▶ Questions

Organization



2021 SCLL Baseball and Softball Teams





Content

- ▶ Welcome to 2021 Spring Season
- ▶ Organization
- ▶ Facilities and Fields
- ▶ Schedules
- ▶ Local Rules
- ▶ Health and Safety
- ▶ Upcoming Activities
- ▶ What You Need to Do
- ▶ Questions

Our Facility is the Best in District 9

We are constantly improving



3D Model View

With facilities located at Lower Potomac Park, SCLL is committed to providing the complete Little League experience for boys and girls, age 4 to 16 within our community. Our program stresses skill development to play the game with confidence while instilling teamwork and sportsmanship. SCLL families enjoy a team of dedicated volunteers, high quality facilities, and the chance to learn and play the game in an open family friendly environment.

It is our goal to improve our facilities with such features as field lighting, parking lighting, pedestrian and handicap access improvements, sun screens, as well as multiple other features to enhance the overall experience for players and families.

Please help SCLL realize its improvement goals!

WWW.SCLLVA.ORG

Email: President@scllva.org for more details

South County Little League is a 501(c)(3) Non-Profit - TAX ID 54-1362238



Butter's eye / Patio Canopy



Parking Lot Improvements



Field 5 Access Improvements



Field 1 & 2 Improvements

- ▶ Field upgrade 2019
 - LP4 / LP5
- ▶ Pitcher Bullpen 2019
- ▶ Outfield tubing 2019
- ▶ Tarps 2019
- ▶ Field upgrades 2020
 - LP1 / LP2 / LP5
- ▶ New Scoreboards
 - LP1 / LP2 / LP5
- ▶ LP5 outfield screen
- ▶ LP5 handicap access
- ▶ Parking lot striping
- ▶ Brick Memorial
- ▶ Storage shed repairs
- ▶ New storage container
- ▶ LP 5 Drainage plan

SOUTH COUNTY LITTLE LEAGUE FACILITY IMPROVEMENT GOALS

Lower Potomac Park

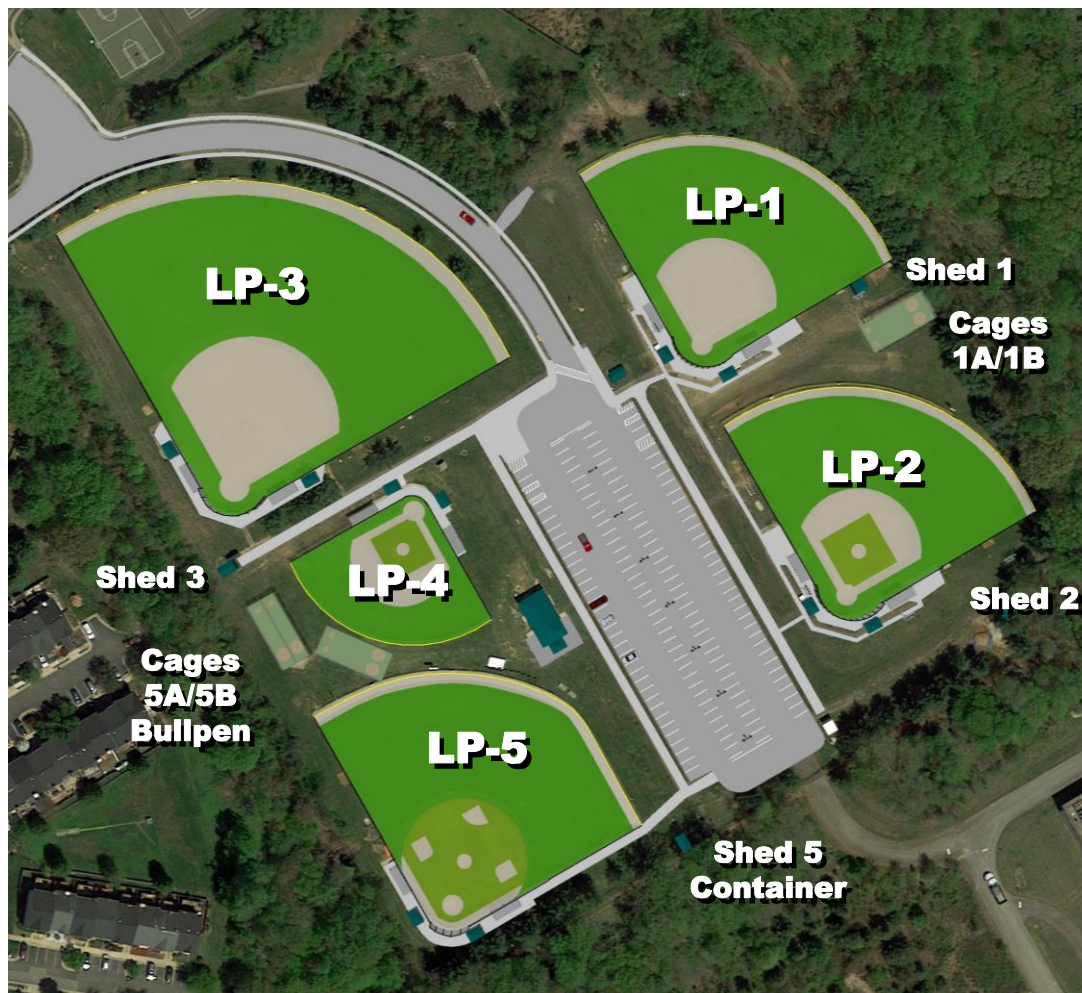
Lorton, Virginia



January 25, 2019

Facility / Field Information

Lower Potomac Park



- ▶ Fields
 - LP1 – A, AA, Softball
 - LP2 – AA, AAA
 - LP3 – Juniors / Seniors
 - LP4 – T-Ball, A, Softball
 - LP5 – Majors, AAA
- ▶ Batting Cages / Bullpen
 - Cages 1A/1B
 - Cages 5A/5B
 - Bullpen at Cage 5A/5B
- ▶ Storage Sheds
 - Sheds, 1, 2, 3, 5
 - Container – NEW
- ▶ Concessions Stand
- ▶ Equipment Storage
- ▶ Parking

Field Maintenance



Welcome to South County Little League

PRE-GAME / PRACTICE FIELD MAINTENANCE

- Check the field for hazards (insecure bases, holes in the ground / fencing).
- Repair minor issues, report major issues to the League Commissioner, Grey Hat of the Day or Field Maintenance Director.
- Remove tarps from LP5
- Drag / groom the skinned areas level and smooth.
- Rake, fill, and groom mound / batter box, as needed.
- Line the infield dirt. **DO NOT USE CHALK ON GRASS AREAS**

POST-GAME/PRACTICE FIELD MAINTENANCE

- Remove bases
- Drag the skinned areas only
- Rake loose dirt from the grass along the base paths, the mound circle, and infield edge back into the skinned areas.
- Rake, fill, and groom the field mound and home plate area.
- Rake, fill, and groom bull pen mounds.
- Replace and tamp loose divots in turf areas.
- Replace mound and home plate tarps and secure if necessary. (LP5)
- Sweep out the dugouts.
- Dispose of trash in and around the field, dugouts, and bleacher areas.

FIELD MAINTENANCE CHECKLISTS

BASE PATH MAINTENANCE

- Remove bases and debris (sticks, rocks, grass clippings).
- Drag the skinned areas—slowly. This grooms the surface and levels low spots. Keep the drag at least 6 inches from the grass edge to prevent LP5 forming.
- Groom the areas next to the turf with a landscape rake.

Tips & Hints

- Change the direction of the drag to prevent buildup; try a spiral drag path.
- If infield mix gets on the turf, use a plastic fan rake or broom to get it out.

Please Avoid

- Raking across the base path. This creates low spots in the middle of the base path and a lip along the grass.
- Raking or squeezeing water out of the base path, going across to the grass, will quickly develop a LIP
- Entering and exiting the field at the same place with the drag.
- Dragging past the skinned area onto the turf will create lips.



HOME PLATE MAINTENANCE

- Rake loose material from the batter & catcher boxes and umpire area to expose hard ground.
- Tamp loose mix into the holes using a tamp or the smooth back of a field rake.
- Rake then repair areas and the rest of the home plate area.
- Cover with a tarp (LP5) to hold in moisture and protect the skinned area from heavy rains.

MOUND MAINTENANCE

- Rake and sweep loose material from the landing area and top of the mound exposing hard ground.
 - The landing area is the place where the pitcher lands with his lead foot.
- Rake the loose moistened material into the holes created by the pitcher.
- Tamp the loose fill using a tamp or the smooth back of a field rake.
- Rake and broom the repaired areas and the rest of the mound.
- Cover with a tarp (LP5) to hold in moisture and protect the skinned area from heavy rains.

MOUND DIMENSIONS

- **60' FIELD** / The pitching block sits 6" above home plate with the front 46" from the back apex of home plate. The top of the mound is level in a 17" (deep) x 48" (wide) box measuring 17" from 4" in front of the pitching block rearwards and centering the 48" width on the pitching block.
- **90' FIELD** / The pitching block sits 10" above home plate with the front 60' 6" from the back apex of home plate. The top of the mound is level in a 34" (deep) x 60" (wide) box measuring 34" from 6" in front of the pitching block rearwards and centering the 60" width on the pitching block.
- The grade for the front of the mound drops 1" for every linear foot starting 4" in front of the block (60' field) and 6" in the front of the block (90' field).

FIELD MAINTENANCE TIPS

LP5 TARPS

- Once removed from the field, hang tarps along the fence line.
- Place tarps on the Mound and Home Plate area after every practice or game unless the field is to be used immediately following.

LP1/LP2 TARPS

- A crew of at least 4 adults is necessary to handle the LP1/LP2 full infield tarps
- Unroll the tarp onto the outfield
- Unfold the tarp in the outfield
- "Fly" the tarp by getting some air under it, and pull over the infield (silver side faces the sky)
- Hold in place with sandbags or stakes.
- When removing the tarp, turn upside down by pulling from one end over the infield and pull all the way to outfield
- Fold tarp longitudinal to roller
- Roll onto roller toward fence, and place cover over the tarp

DRYING AGENT

- Need permission from Grounds Director to use.
- Use drying agents sparingly and only for games; overuse can adversely affect the playing surface.
- Apply drying agent an hour or more before game time so it will have time to work.

Practice Facilities

FFX County Allocations for practices off-site



Lower Potomac

Halley ES

Newington
Forest ES

Laurel Hill ES

Gunston ES

Laurel Hill Park



Content

- ▶ Welcome to 2021 Spring Season
- ▶ Organization
- ▶ Facilities and Fields
- ▶ Schedules
- ▶ Local Rules
- ▶ Health and Safety
- ▶ Upcoming Activities
- ▶ What You Need to Do
- ▶ Questions

Schedules

Heather Sniffen – Scheduler@scllva.org



▶ Pre-Opening Day / Week

- Starting week of March 8
- Generally, 2 Practices per week per team
- Prioritization / field-sharing may be required in some divisions

▶ Spring Break Week

- No Scheduled Practices March 27 through April 4
- Feel free to schedule practice – request from scheduler

▶ Post-Spring Break

- Games will start for some Divisions during the week of April 5 (After Easter Sunday)
- Rotating schedule up to Memorial Day Weekend
- No games Memorial Day Weekend
- Double Elimination Playoffs (AA/AAA/Majors) – Starts week of May 24, 2021
- Championship Saturday – June 5, 2021

▶ Schedule Planning

- T-Ball (1 practice per week / 1 game on Saturday)
- Single A (Alternate weekly practice/games 1:2 and 2:1)
- AA / AAA / Majors (Field practice + batting / 2 games/week)
- Juniors – Master D9 Scheduler – Weeknight / Saturday (various locations)
- Seniors – Master D9 Scheduler – Double Headers Saturday (various locations)

▶ Interleague Games for Seniors / Juniors / Majors



Content

- ▶ Welcome to 2021 Spring Season
- ▶ Organization
- ▶ Facilities and Fields
- ▶ Schedules
- ▶ Local Rules
- ▶ Health and Safety
- ▶ Upcoming Activities
- ▶ What You Need to Do
- ▶ Questions

Little League Rules

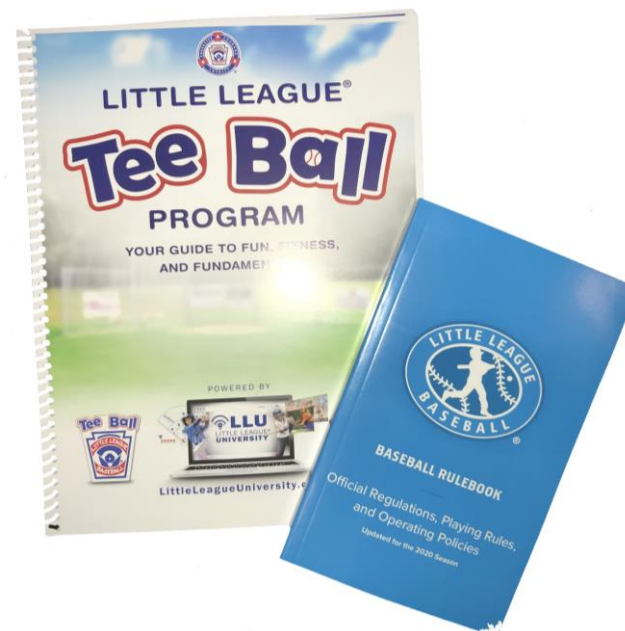
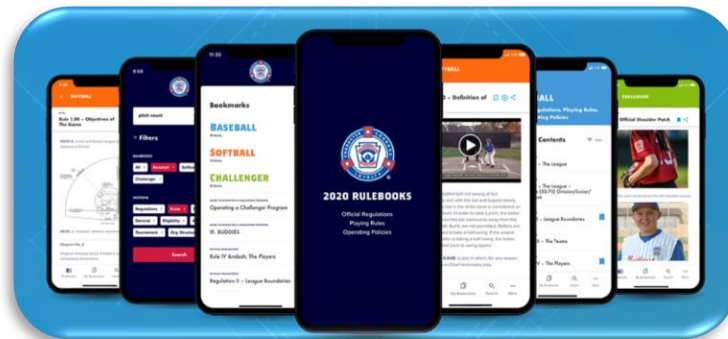
Local Rules



SCLL 2021 LOCAL RULES SUMMARY



	Majors	AAA	AA	A	T-Ball
Age Guidelines	11-12	9-11	7-9	6-8	4-6
Keep Standings	Yes	Yes	Yes	No	No
Keep Score	Yes	Yes	Yes	Yes	No
Ball Delivery	Player	Player	Player (with coach pitch)	Machine pitch	Tee/soft toss optional
Batting Order	Continuous	Continuous	Continuous	Continuous	Continuous
Strike Outs	3 (uncaught 3 rd strike in effect)	3	3 (coach pitch)	3	No
Walk	Yes	Yes	No	No	N/A
Infield Innings	N/A	1	1	2	1
Defensive Innings Per Player	3 of first 5 innings	3 of first 5 innings	No one sits twice until all sit once	No one sits twice until all sit once	All play
Percent of Team Pitching	N/A	50% must pitch 100/season	50% must pitch 100/season	N/A	N/A
Max Innings Per Position Non-Pitching	N/A	4	3	N/A	2
Max Inning Pitching	N/A	N/A	3	N/A	N/A
Max Runs Per Inning	8	5	4	3	N/A
Max Runs Last Inning	N/A	10	8	6	N/A
Time Limit	N/A - Week 2:00 - Weekend	2:00 - Week 2:00 - Weekend	1:45 - Week 1:45 - Weekend	1:45 - Week 1:45 - Weekend	N/A
No New Inning Start - New Inning starts on last out					
Batter's Foot in Box	No	No	No	No	No
Courtesy Runner	Yes	Yes	Yes	N/A	N/A
If only 8 players at Start of Game	Skipped Batter is Out	Skipped Batter is Out	Batter is Skipped	Batter is Skipped	N/A
Bunt	Yes (if show, can't swing)	Yes (if show, can't swing)	Yes (if show, can't swing)	No	No
Steal	After ball reaches batter	After ball reaches batter	1 base/bat, can't advance home	No	No
Mercy Rule - 4 Innings	10 runs	10 runs	10 runs	N/A	N/A
Mercy Rule - 3 Innings	15 runs	15 runs	N/A	N/A	N/A
Post Season	Yes	Yes	Yes	No	No

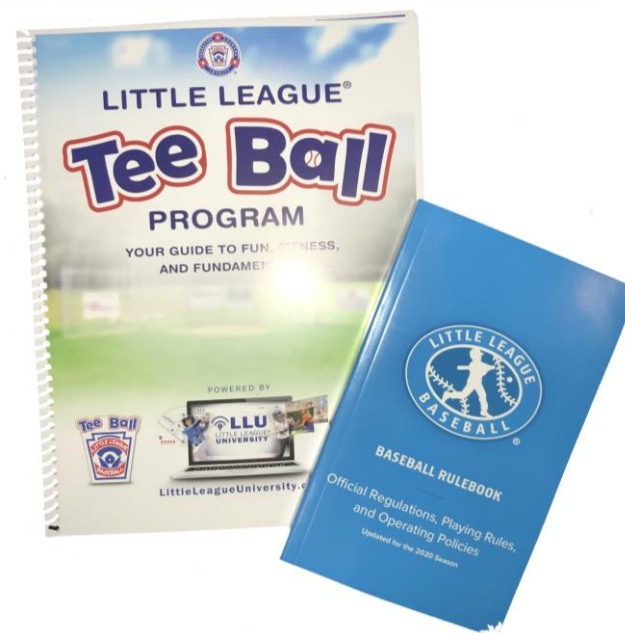
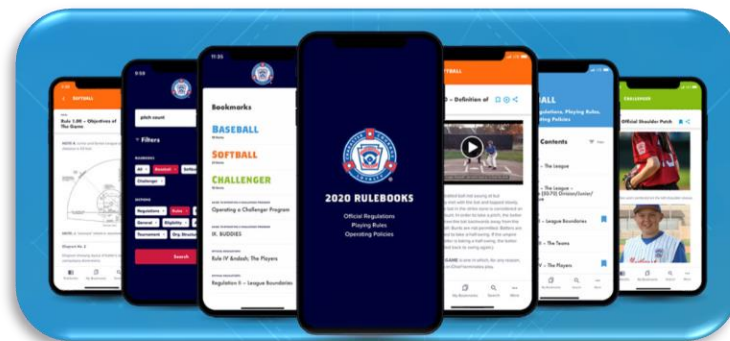


Rule Books

SCLL Rules Clinic – March 21, Time TBD



- ▶ **Little League is promoting the use of its Rules App**
 - App is available on Google Play and Apple App Store
 - \$1.99 Download – Free updates
 - Tee Ball not digital
- ▶ **Limited Supply of Printed Books available from Little League**
 - If you want one, let us know, and we will order them – Let us know by end of the weekend
 - Will provide Tee Ball printed books
- ▶ **Encourage Managers to use the App**
 - Free hotdog at the concessions stand if you download the App.



Local Rules Major Changes



- ▶ **New Inning Run Limit in Majors (Regular Season only)**
 - Max 8 runs per inning. LL Mercy Rules also Apply
- ▶ **Can start game with 8 players**
 - Majors / AAA – Skipped player is out
 - AA / A – Skipped player is skipped
- ▶ **Courtesy Runner**
 - Last batted out may run for pitcher or catcher
- ▶ **Umpire Location**
 - Umpires may opt to call from behind plate or behind mound
 - Umpires behind plate will wear a facial covering
- ▶ **Majors Draft 'Keeper System'**
 - Going forward, majors players selected in 2021 will stay with their teams until they age out or request to be returned to the player pool

Umpires



- ▶ **Umpires are only required at certain divisions**
 - Seniors / Juniors – 2 Adults
 - Majors / AAA – Adult / Teen
 - AA – Teens
 - 12U Softball – Adult / Teen
 - *No Umpires for Single A or T-Ball*
- ▶ **Each Team must identify an adult volunteer as an umpire**
 - Umpires “Sign-Up” for games with Sign-Up Genius
 - We cannot guarantee umpires for every game
 - Higher level games take priority
 - 2019 / 2020 – SCLL had better than 95% coverage
- ▶ **Training / Equipment for umpires is provided**
 - Adult volunteers who umpire 6 or more games may keep equipment
- ▶ **Please be respectful of the umpires**

Test Your Baseball IQ

Make the Call





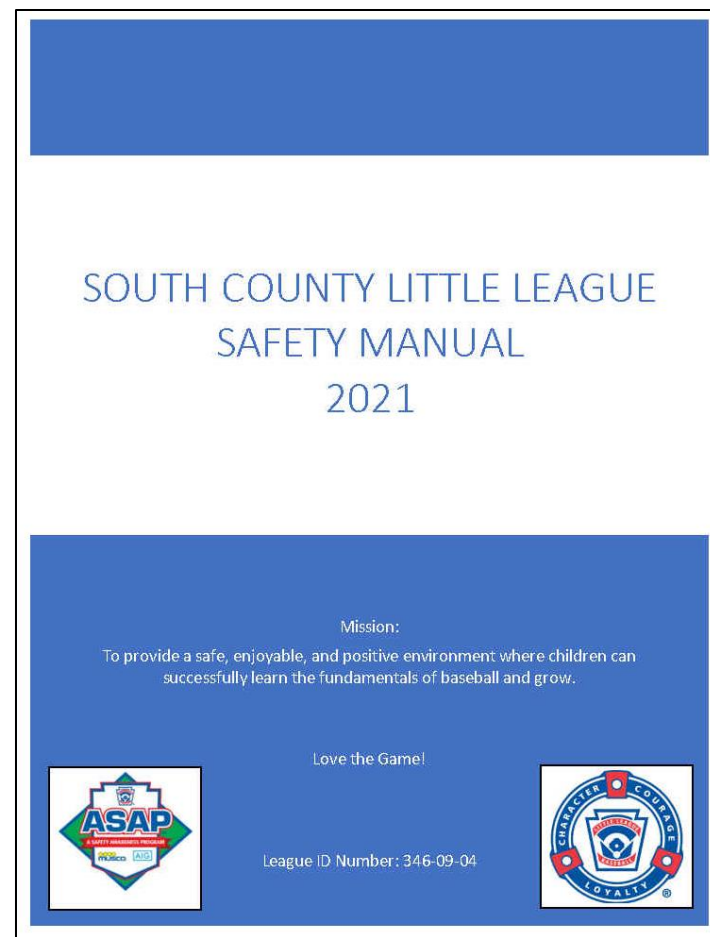
Content

- ▶ Welcome to 2021 Spring Season
- ▶ Organization
- ▶ Facilities and Fields
- ▶ Schedules
- ▶ Local Rules
- ▶ Health and Safety
- ▶ Upcoming Activities
- ▶ What You Need to Do
- ▶ Questions

Health & Safety



- ▶ ASAP Plan
- ▶ CDC Concussion Training
- ▶ First Aid Kits
- ▶ COVID 19 Protocols
- ▶ Lightning / Weather
- ▶ Player Equipment
- ▶ Catchers / Pitcher Warm-up



COVID 19 Protocols

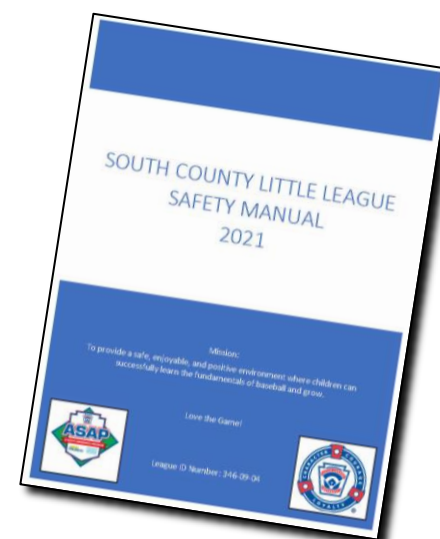


- ▶ Everyone must Self-Screen according to CDC questionnaire
- ▶ Players bring their own hand sanitizer
- ▶ Players / Parents bring their own chairs
- ▶ Write names on all water bottles / equipment
- ▶ Set up bags/chairs at marked locations along fence lines
- ▶ No sharing of equipment
- ▶ No Chewing Gum / Spitting
- ▶ No High-Fives, Fist Bumps, or unnecessary contact
 - Tip hat to opposing teams at the end of the game
- ▶ No Horse play
- ▶ Defense provides balls for half-inning
- ▶ Have a mask with you – Mask-up as a spectator and when in close proximity to others
 - Not required for players while playing on field



BACK TO PLAY SAFETY VIDEO

<https://fb.watch/49ZPVloxxv-/>



COVID 19 Protocols

Seating



- ▶ Everyone brings their own chairs – maintain distance





Content

- ▶ Welcome to 2021 Spring Season
- ▶ Organization
- ▶ Facilities and Fields
- ▶ Schedules
- ▶ Local Rules
- ▶ Health and Safety
- ▶ Upcoming Activities
- ▶ What You Need to Do
- ▶ Questions

Upcoming Events



Date	Time	SCLL Program	Event
11-Mar-21	7:30PM	Baseball/Softball	Managers Meeting—Zoom Call
13-Mar-21	TBD	Baseball	Baseball Manager / Coaches Clinic—South County High School Stallions Head Coach Scott Nelson
13-Mar-21	9AM-12PM	Baseball/Softball	SCLL Umpire Training / Refresher—Lower Potomac
14-Mar-21	1PM—2:30PM	Baseball	Team Parent Meeting—Zoom Meeting
21-Mar-21	TBD	Baseball	Rules Clinic—Zoom Meeting
TBD	TBD	Softball	Softball Hitting Clinic for All Levels—LP1
10-Apr-21	9AM—10AM	Baseball/Softball	OPENING DAY - Ceremonies will be limited
Sunday in April	TBD	Baseball	Baseball Catchers Clinic - Lower Potomac
Sunday in April	TBD	Baseball	Baseball Pitching Clinic - Lower Potomac
Sunday in April	TBD	Baseball	Baseball Hitting Clinic - Lower Potomac
TBD	All Day	Baseball/Softball	Picture Day—Team / Sponsors / Individual Players
TBD	All Day	Baseball/ Softball	Picture Day—Team / Sponsors / Individual Players
24-May-21	All Day	Baseball	Start of SCLL Post Season Tournament—All AA to Majors Teams will participate in an intra-league double elimination tournament, going for all the marbles.
May 29—May 31	All Weekend	Baseball/Softball	Memorial Day Weekend—NO GAMES
1-Jun-21	All Day	Baseball	All Stars Teams Announced / Start of All Stars Season
5-Jun-21	All Day	Baseball/Softball	Championship Saturday / Close of Regular Season
June 12, 2021— June 20, 2021 (estimated)	District 9 Fun Tournament	Baseball	The District 9 Fun Tournament allows Leagues to form teams for inter-league double elimination competition, similar to All Stars. Any player may register to play
June 5, 2021—July 14, 2021 (estimated)	District 9 All Stars Tournaments	Baseball	Players selected to All Stars teams will practice and participate in the D9 All Star Tournament. The event varies by age group, and more details will follow

Metropolitan Training Clinics at Lower Potomac

April Sundays TBA



2021 SCLL

Baseball

CATCHING CLINIC

Led by Metro Baseball Academy

A, AA, AAA & Majors Players

2-5 PM

SOUTH COUNTY LITTLE LEAGUE FIELDS

WWW.SIGNUPGENIUS.COM/GO/20F0B4AA4AC22AAF49-SCLL

FREE!!!

WWW.SCLLVA.ORG

Made with PosterMyWall.com

2021 SCLL

Baseball

PITCHING CLINIC

Led by Metro Baseball Academy

A, AA, AAA & Majors Players

2-5 PM

SOUTH COUNTY LITTLE LEAGUE FIELDS

WWW.SIGNUPGENIUS.COM/GO/20F0B4AA4AC22AAF49-SCLL

FREE!!!

WWW.SCLLVA.ORG

Made with PosterMyWall.com

2021 SCLL

Baseball

HITTING CLINIC

Led by Metro Baseball Academy

A, AA, AAA & Majors Players

2-5 PM

SOUTH COUNTY LITTLE LEAGUE FIELDS

WWW.SIGNUPGENIUS.COM/GO/20F0B4AA4AC22AAF49-SCLL

FREE!!!

WWW.SCLLVA.ORG

Made with PosterMyWall.com



Content

- ▶ Welcome to 2021 Spring Season
- ▶ Organization
- ▶ Facilities and Fields
- ▶ Schedules
- ▶ Local Rules
- ▶ Health and Safety
- ▶ Upcoming Activities
- ▶ What You Need to Do
- ▶ Questions

Key Things We Need You To Do

Go to Helpful Links on www.scllva.org



- ▶ Complete Background Check



- ▶ Identify Your Volunteers

- Assistant Coaches
- Team Parent
- Umpire (AA and Up)



- ▶ Pick up Equipment – James Cyphers

- ▶ Collect Medical Release Forms from Players

- ▶ Concussion Certification Training

- ▶ Register Team on Team Manager



- ▶ Coordinate any Schedule Issues with Scheduler

Little League Baseball and Softball MEDICAL RELEASE

NOTE: To be carried by any Regular Season or Tournament Team Manager together with team roster or International Tournament affidavit.

Player: _____

Parent (s)/Guardian Name: _____ Date of Birth: _____ Gender (M/F): _____

Player's Address: _____ Relationship: _____

Home Phone: _____ City: _____ State/Country: _____ Zip: _____

Work Phone: _____ Mobile Phone: _____ Email: _____

PARENT OR LEGAL GUARDIAN AUTHORIZATION:

In case of emergency, if family physician cannot be reached, I hereby authorize my child to be treated by Certified Emergency Personnel (i.e. EMT, First Responder, E.R. Physician)

Family Physician: _____ Address: _____

Hospital Preference: _____ Phone: _____

Parent Insurance Co.: _____ City: _____ State/Country: _____

League Insurance Co.: _____ Policy No.: _____ Group ID#: _____

If parent(s)/legal guardian cannot be reached in case of emergency, contact:

Name: _____ Phone: _____ Relationship to Player: _____

Provide any allergies/medical problems, including those requiring medication (e.g. Diabetes, Asthma, Seizure Disorder)

Medical Diagnosis	Medication	Dosage	Frequency of Dosage

Date of last Tetanus Toxoid Booster: _____

The purpose of the above form is intended to ensure that medical personnel have timely of any medical problem which may involve with or alter treatment.

Mr./Mrs./Ms. _____ Authorized Parent/Guardian Signature _____ Date: _____

FOR LEAGUE USE ONLY:

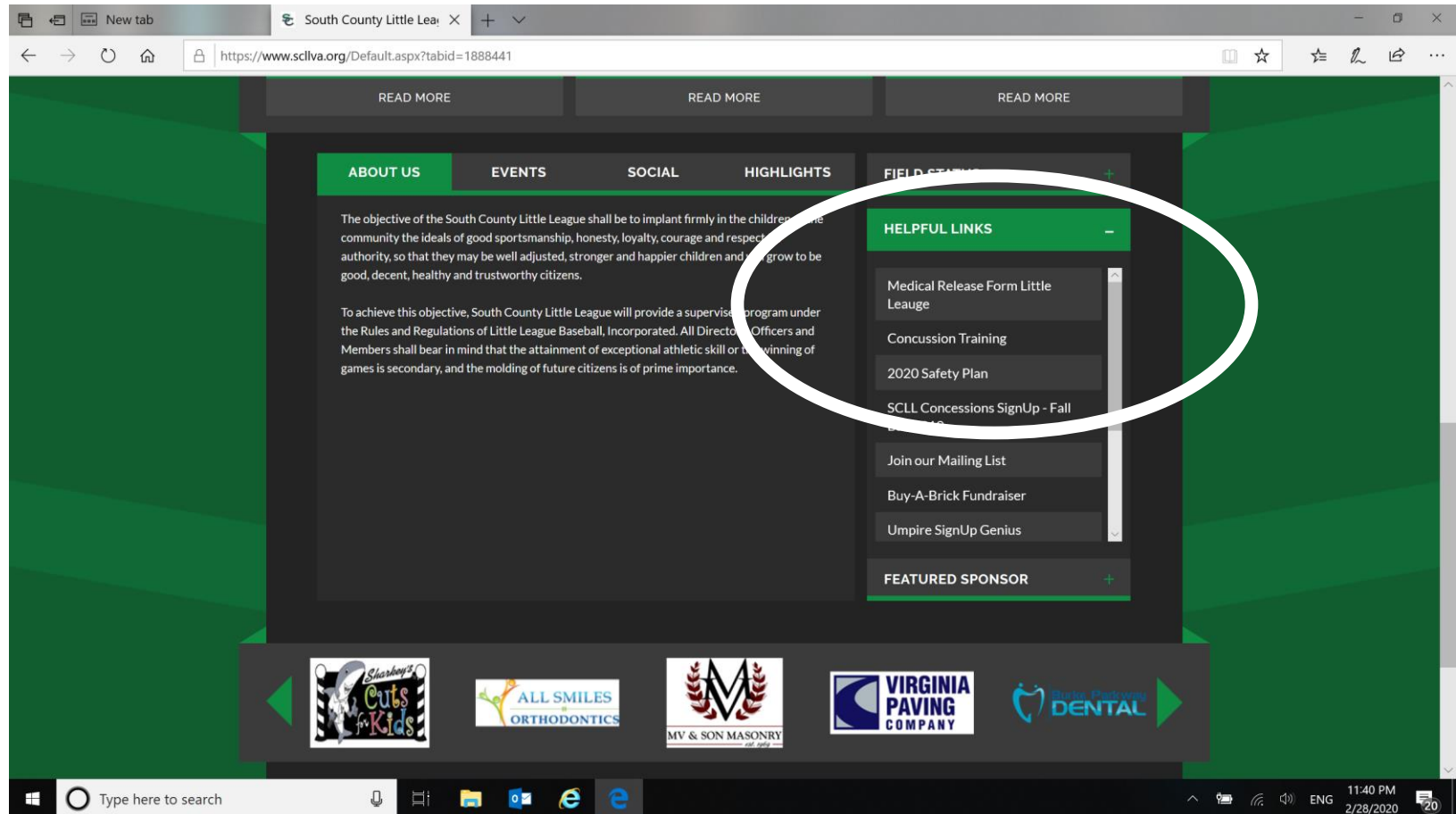
League Name: _____ Team: _____ League ID#: _____

Division: _____ Date: _____

WARNING: PROTECTIVE EQUIPMENT CANNOT PROTECT ALL PLAYERS. A PLAYER WHO PARTICIPATES IN BASEBALL/SOFTBALL, while wearing protective equipment, assumes the risk of injury and agrees to release the Little League from liability.

The Helpful Links are on our Website

www.scllva.org





Content

- ▶ Welcome to 2021 Spring Season
- ▶ Organization
- ▶ Facilities and Fields
- ▶ Schedules
- ▶ Local Rules
- ▶ Health and Safety
- ▶ Upcoming Activities
- ▶ What You Need to Do
- ▶ Questions